

Net-Print



Using Net-Print at Mann Library



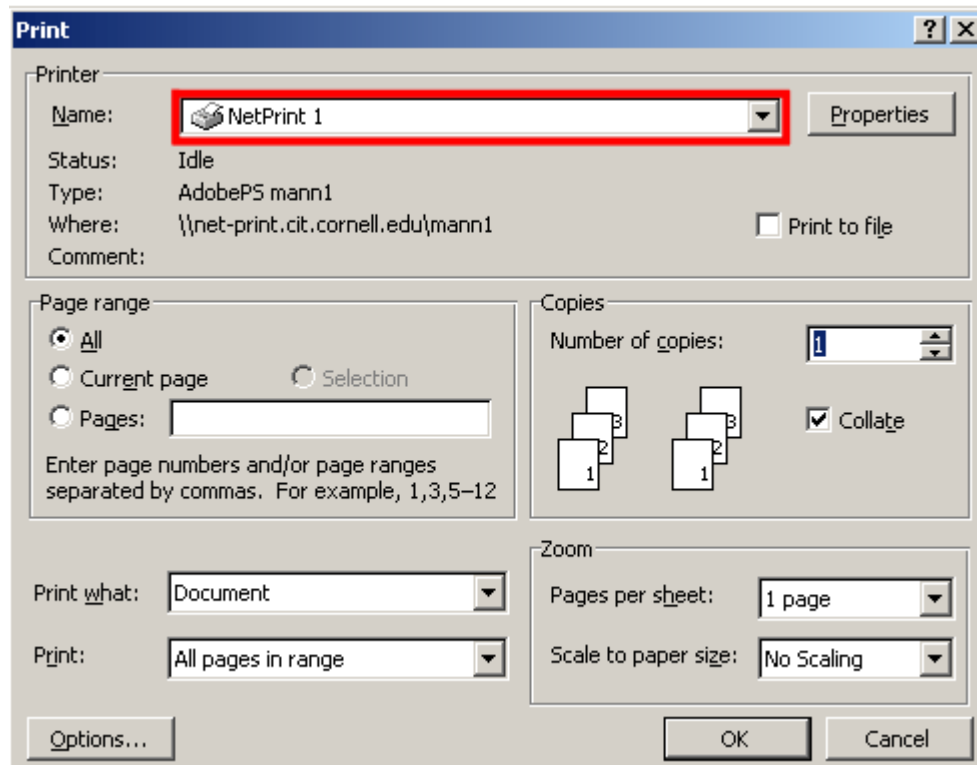
Lexmark T622 Laser Printer

Requirements

1. You must be signed up. To do this, go to the [CIT Net-Print sign up page](#).
2. Sidecar must be running on your machine. If you try printing without it running, the net-printer will print an error page telling you that sidecar is not running. To restart it, open up Bear Access from the Start menu or ask an operator for help.

Printing Instructions

1. Select the Net-Print Printer in the print window of the application you are using. For most computers you have the choice to print to either Net-Print 1 or 2. However, some are set to print to Net-Print 3. All are located in front of the operator's desk at Stone Center.



The Net-Printer will print a header on your printout with information like the time/date and your net-id. To disable this, you must edit the net-print properties on your account page. To do this, go to the [net-print account page](#).

For more information on Net-Print, visit [CIT's Net-Print main Page](#).